



# PMP SERIES

PERISTALTIC METERING SYSTEM



With **NEW**  
 Pump Activator  
 Options

The PMP Series peristaltic metering pump system is designed to dispense a variety of cleaning and sanitizing chemicals.

Positive, accurate metering of liquids can be triggered manually or by a process control signal. The PMP Series offer variable speed output or fixed speed output with a choice of programmable limit-timer or repeating cycle timer.

PMP is built with Knight's field proven, long-life peristaltic pumps. Moisture sensitive motor and controllers are enclosed in a corrosion resistant, watertight, powder coated case that stands up well for indoor and outdoor applications.

## KEY FEATURES/BENEFITS:

- Auto-Start or Optional Manual Button Activation **NEW!**
- Watertight, Secure Locking Enclosure **NEW!**
- Single or Multi-Product Remote Activator (Optional) **NEW!**
- Long-Life Peristaltic Pumps
- Water Resistant Case w/"D" Shaped Silicone Gasket **NEW!**
- Long Lasting Squeeze Tube
- Fixed or Variable Pump Speed
- Wide Range of Flow Rates
- Microprocessor, Push Button Programming Available **NEW!**
- Pumps Up to 30 PSI
- Self Priming, Easy to Service
- Pump Lockout Option **NEW!**

## PMP SYSTEM APPLICATIONS

### FOOD & BEVERAGE PROCESSING PLANTS

- CIP/COP
- Grease Traps
- Sewage Treatment

### DAIRY

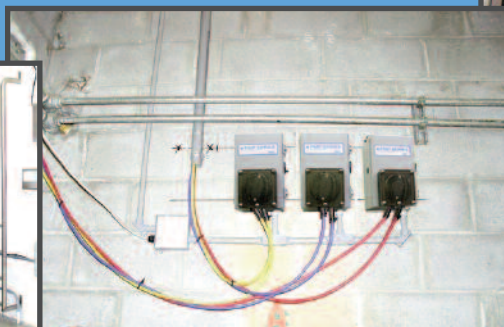
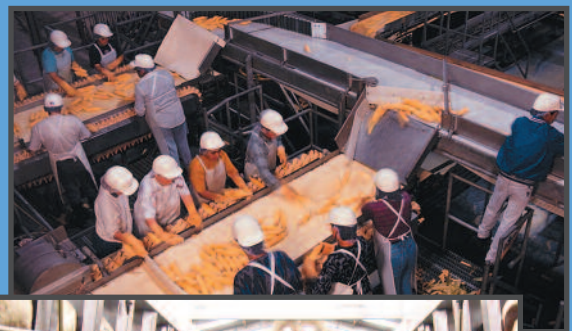
- Pipeline Cleaning/Sanitizing
- Teat Dip Chemical
- Wash Pen Chemical Injection

### INDUSTRIAL

- General Cleaning
- Machinery Lubrication
- Cooling Towers
- Boilers

### TRANSPORTATION

- Car Wash Stations



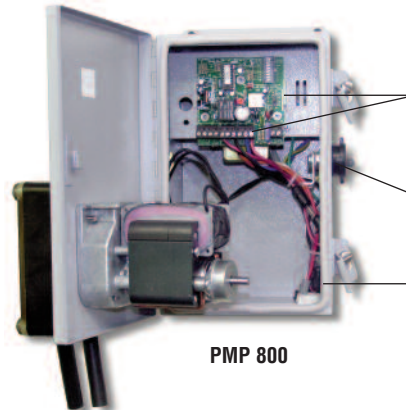


# PMP SERIES

## PERISTALTIC METERING SYSTEM

### PMP SPECIFICATIONS

Enclosure:	Powder coated #304 stainless steel.
Pump Drive:	Shaded pole AC or variable DC.
Squeeze Tube:	Material available for most chemical applications.
Control:	Limiting timer or repeating cycle timer.
Power Supply:	115VAC/60HZ, 230VAC/60HZ, 230VAC/50HZ
Dimensions:	PMP-500: 9.3"H x 5.8"W x 5"D (23.6cm x 14.7cm x 12.7cm)
	PMP-800: 9.3"H x 5.8"W x 5"D (23.6cm x 14.7cm x 12.7cm)
	PMP-900: 13.6"H x 8"W x 7.5"D (34.5cm x 20.3cm x 19.1cm)



PMP 800

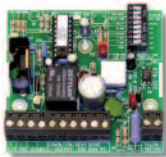
Snap-on Mounting Clips And Plug-On Barrier Strips Provide Quick And Easy Service of Circuit Board

Secure Locking Enclosure

"D" Shaped Silicon Gasket Provides Water Resistant Seal

### PMP AC FIXED SPEED

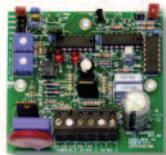
#### Electronic Control Options



#### KTM-600

Electronic variable limiting timer, standard on time, 0-12 minutes. Pump activates by a momentary switch or an electrical signal. Pump lock-out feature prevents abuse and over use of products. **NEW!**

Add -21 to Part # for 115/60 HZ  
Add -22 to Part # for 230/60 HZ  
Add -23 to Part # for 230/50 HZ



#### CT-200

Electronic Repeating Cycle Timer. Selectable off period from 0-90 minutes. Pump on time adjustable from 0-2 minutes.

Add -31 to Part # for 115/60 HZ  
Add -32 to Part # for 230/60 HZ  
Add -33 to Part # for 230/50 HZ

#### PMP w/o Control.

Add -01 to Part # for 115/60 HZ  
Add -02 to Part # for 230/60 HZ  
Add -03 to Part # for 230/50 HZ

#### PMP 500 SERIES (UP TO 4.4 GPH)

Model	Part #	Tube	Max PSI	Oz/Min	mL/Min	GPH
PMP-530	8452134	T-50E	30	2.4	70	1.1
PMP-5100	8453142	T-50E	30	9.3	275	4.4

#### PMP 800 SERIES (UP TO 19 GPH)

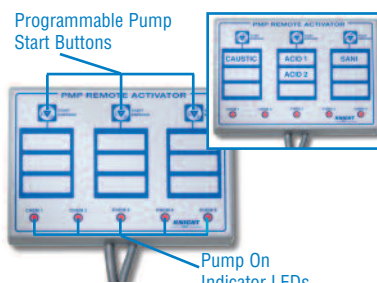
Model	Part #	Tube	Max PSI	Oz/Min	mL/Min	GPH
PMP-8120A	8457143	T-50E	30	23	670	11
PMP-8120B	8457830	T-66E	30	40	1180	19

#### PMP 900 SERIES (UP TO 105 GPH)

Model	Part #	Tube	Max PSI	Oz/Min	mL/Min	GPH
PMP-9130	8457760	T-86E	30	149	4400	70
MP-9270	8457765	T-86E	30	223	6600	105

### PUMP ACTIVATOR OPTIONS

**New!**



Multi-Product Remote Activator  
P/N 7655140



Single Product Remote Activator  
P/N 7111460

Case Mounted Manual Start Button  
P/N 1900452

### PMP DC VARIABLE SPEED

#### Power Options

Add -01 to Part # for 115/60 HZ  
Add -02 to Part # for 230/60 HZ  
Add -03 to Part # for 230/50 HZ

#### PMP 500 SERIES (UP TO 5.3 GPH)

Model	Part #	Tube	Max PSI	Oz/Min	mL/Min	GPH
PMP-515-3VS	8453405	T-53E	30	.88	26	.41
PMP-515VS	8453410	T-50E	30	1.45	43	.68
PMP-560VS	8453415	T-50E	30	5.10	152	2.65
PMP-5110VS	8453425	T-50E	30	11.2	332	5.3

#### PMP 800 SERIES (UP TO 16.8 GPH)

Model	Part #	Tube	Max PSI	Oz/Min	mL/Min	GPH
PMP-8110VS	8453440	T-50E	30	21	614	9.7
PMP-8120B	8453445	T-66E	30	36	1081	16.8

#### PMP 900 SERIES (UP TO 63.4 GPH)

Model	Part #	Tube	Max PSI	Oz/Min	mL/Min	GPH
PMP-9100VS	8450170	T-86E	30	135	4000	63.4

### KNIGHT LIMITED WARRANTY

Knights controls and pump systems are warranted against defects in material and workmanship for a period of ONE YEAR. All Electronic Control Boards have a TWO YEAR warranty. Warranty applies only to the replacement or repair of such parts when returned to the factory with a KRA number, freight prepaid and found to be defective upon factory inspection. Rubber and synthetic rubber parts such as "O" rings, diaphragms, squeeze tubing and gaskets are considered expendable and are not covered under warranty. Warranty does not cover liability resulting from performance of this equipment nor the labor to replace this equipment. Product abuse or misuse voids warranty. Knight products are not for use in potentially explosive environments. Any use of our equipment in such an environment is at the risk of the user. Knight does not accept any liability in such circumstances.

### KNIGHT DISCLAIMER

The information and specifications included in this publication were in effect at the time of approval for printing. Knight, LLC, reserves the right, however, to discontinue or change specifications or design at any time without notice and without incurring any obligation whatsoever.